



# 2022 LWG MEMBER CONFERENCE

Hybrid • September 22, 2022

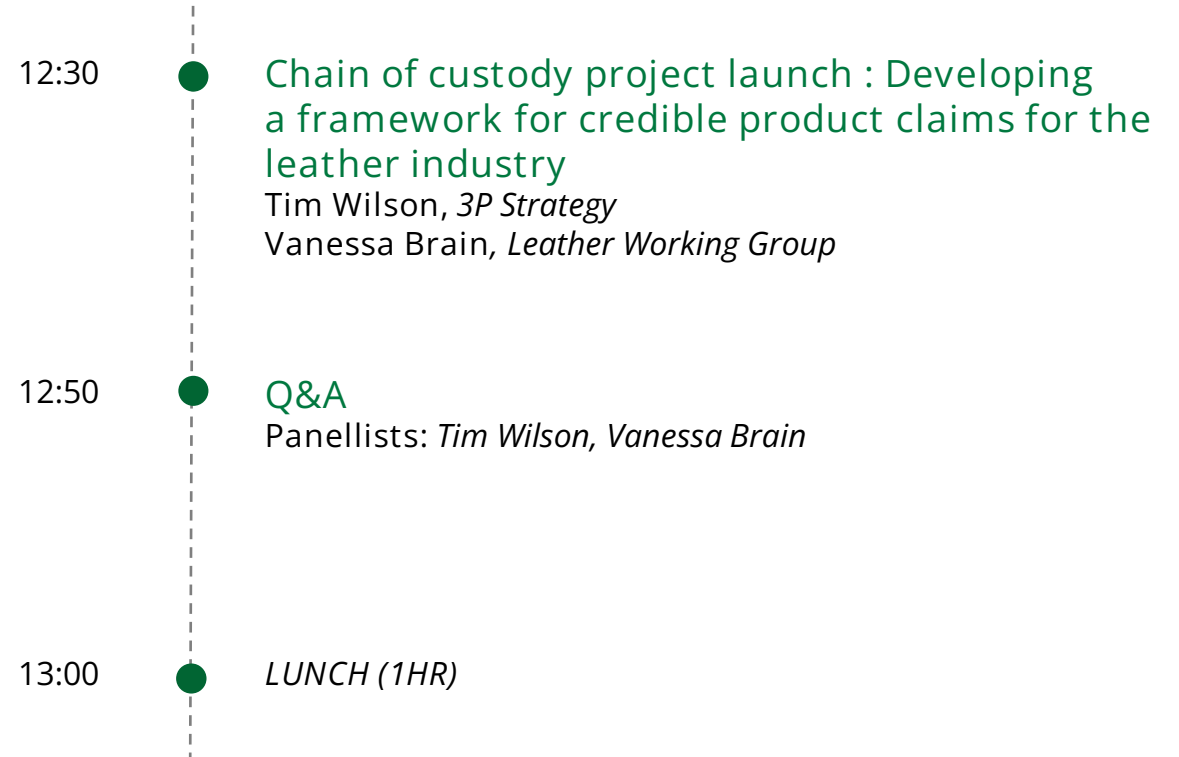
**SESSION 3:**  
Chain of Custody



## SESSION 3

# Chain of custody

To achieve even greater transparency within the leather supply chain, we need to ensure product sustainability claims can be verified. In this session, LWG will announce more details of their upcoming chain of custody project.





Tim Wilson  
Director

*3P Strategy*

## Chain of custody project launch : Developing a framework for credible product claims for the leather industry

In this session we will launch the engagement program for the first phase of LWG's Chain of Custody development. Tim will explain the innovative plans for this project to deliver the framework for verified claims, on the sustainability performance of leather to be made by LWG members.

### Speaker Profile

Tim Wilson is an experienced entrepreneur, business leader, analyst and consultant. He has worked on supply chain traceability, transparency, and trust for over 25 years. In 2003 he founded the world's first 'traceability as a service' technology platform that was designed for use by global brands and retailers and deployed globally.

Tim founded 3P Strategy in 2018 to support organizations and groups in their mission to improve the sustainability performance of their supply chains through improved transparency and robust environmental and social impact claims

# LWG Chain of Custody project launch :

## Developing a framework for credible product claims for the leather industry

Tim Wilson – 3P Strategy

Vanessa Brain - Traceability Manager

LWG Member Conference

Milan, 22 Sep 2022



# Traceability in focus...



Climate change...





# Consumer choice...



Being naked is the #1 most sustainable option. We're #2.



# Regulations...





# Global supply network...



# Benefits for LWG members



Sales ↑



Cost ↓



Risk ↓



# The route to verified product claims...

*'Fulfilling the commitment to enable verified product claims will enhance the market presence and value of responsibly produced leather in consumer markets globally'*



# Three major changes...

**Expand** the Chain of Custody scope



**Focus** on the 'flow of materials'



**Control** the product claims



# Three small steps...



**Develop** and agree the details



**Support** data exchange between members



**Integrate** internal systems and processes



# Three design principles...

**Build** on standards



Use existing standards  
wherever possible

**Keep** it simple



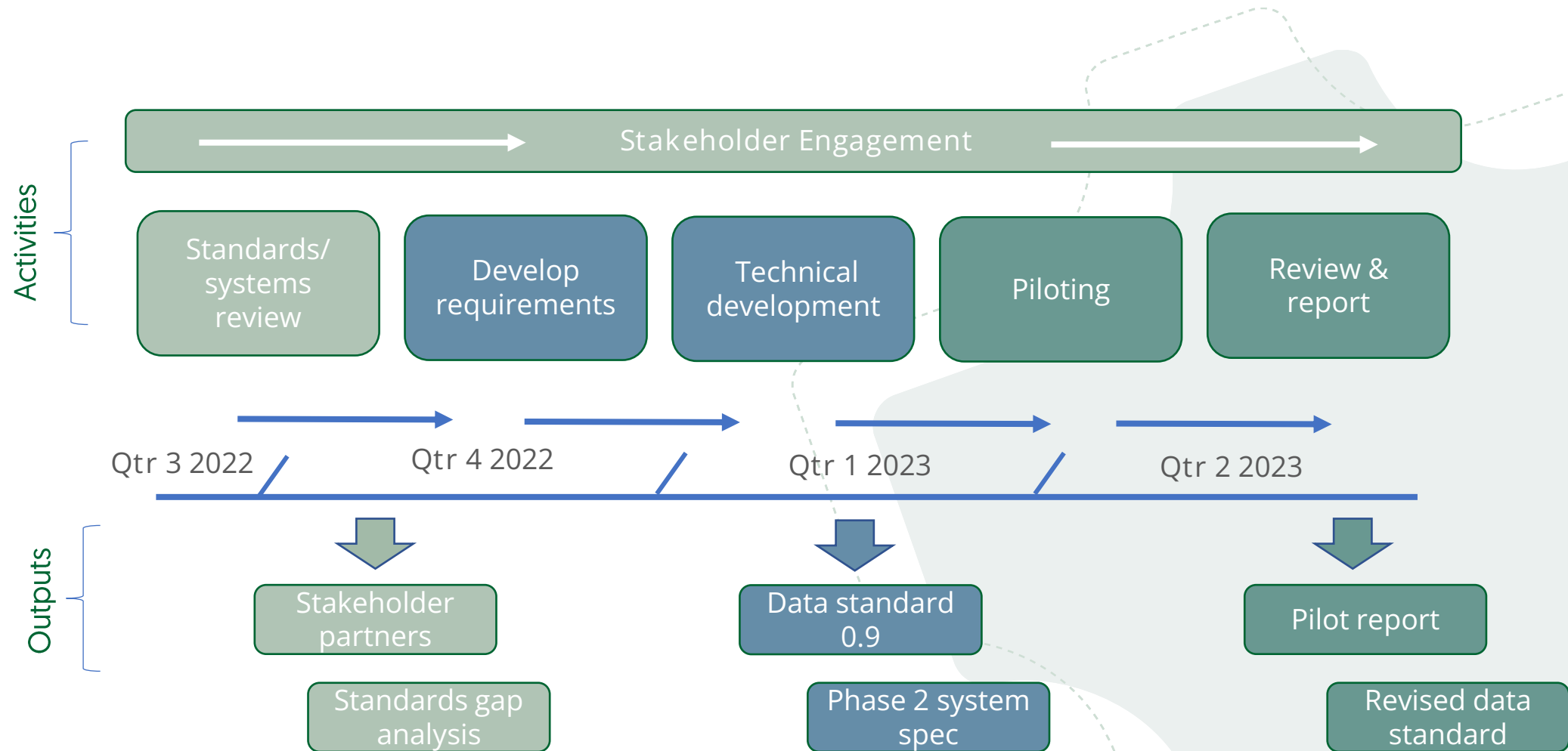
Only change what we  
have to

**Make** it 'open'



Ensure flexibility of  
implementation

# Phase one project plan





# We need you to get involved

1

Stay informed

Receive updates from the project team - participate in surveys & polls

2

Be heard

Join LWG Chain of Custody Steering Committee

3

Shape the future...

Become an active project partner

Contact: [chainofcustody@leatherworkinggroup.com](mailto:chainofcustody@leatherworkinggroup.com)



# 2022 LWG MEMBER CONFERENCE

Hybrid • September 22, 2022

Sponsored by:

**PIPER & SKYE**

Thank you!