



2022 LWG MEMBER CONFERENCE

Hybrid • September 22, 2022

SESSION 2:
Traceability in Focus



SESSION 2

Traceability in focus

Traceability is one of the most critical areas to address, to date. Consumers want to know where the leather in their product comes from and that it has been sourced responsibly.

This session will give a deep dive into the realities of driving transparency and developing a robust global due diligence framework for the leather industry. Both critical to facilitate better traceability, deforestation due diligence, and address other crucial issues across the leather supply chain.

- 11:10 ● **Monitoring deforestation due diligence in Brazil**
Lisa Rausch, *University of Wisconsin-Madison*
- 11:25 ● **A market-based approach to due diligence & traceability**
Hillary Fenrich, *National Wildlife Federation*
- 11:40 ● **The tannery perspective on traceability**
Ivens Domingos, *Durli Leathers*
- 11:50 ● **Turning targets into action and solutions through the LWG Traceability Roadmap**
Vanessa Brain, *Leather Working Group*
- 12:00 ● **Q&A Panel Discussion**
Panellists: *Vanessa Brain, Hillary Fenrich, Lisa Rausch, Austin Davidsen, Ivens Domingos*, & chaired by *Tim Wilson (3P Strategy)*
- 12:30 ● **NEXT SESSION: CHAIN OF CUSTODY**



Lisa Rausch
Associate Researcher

University of Wisconsin-Madison

Monitoring deforestation due diligence in Brazil

Lisa will present an overview of existing cattle agreements that provide a framework for deforestation due diligence in Brazil. She will also share insights from research into rates of compliance with the agreements and guidance on how to interpret data on deforestation.

Speaker Profile

Dr. Lisa Rausch is a Scientist in the Gibbs Land Use and Environment Lab in the Center for Sustainability and the Global Environment at the University of Wisconsin – Madison. Lisa has over two decades of experience investigating environmental compliance in major commodity supply chains in Latin America. She has been the recipient of several prestigious grants and fellowships, including a Fulbright for her doctoral research in Brazil.

Lisa's research has been published in numerous high profile scientific publications, including Science, Nature Food, Nature Sustainability, Journal of Peasant Studies, Conservation Letters, Environmental Research Letters, Global Environmental Change, and others. Lisa's research is regularly covered by major media outlets, such as The New York Times, Christian Science Monitor, Mongabay, and Minneapolis Star Tribune.



Monitoring, deforestation & due diligence in Brazil

Dr. Lisa Rausch

University of Wisconsin – Madison

LWG Membership Meeting

Milan, Italy

22 September 2022

Outline

- Land Use Context
- Policy Context
- Overview of data available for monitoring in Brazil
- Slaughterhouse & risk mapping project
- Summary: Due diligence in Brazil

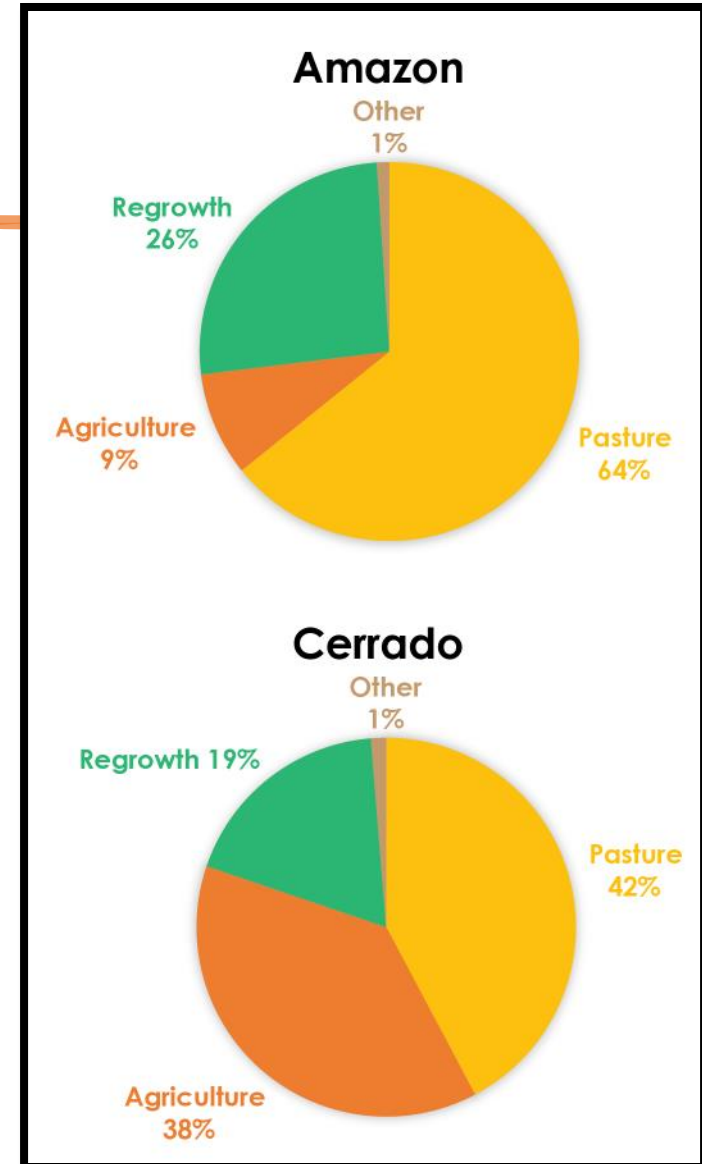
Brazil in Context

- Largest country in South America
- Holds 65% of the Amazon forest
- Biggest deforester but also conserves lots of forest
- Largest cattle herd in the world
- Agricultural expansion and conservation concerns centered in Amazon and Cerrado biomes



Land use in Brazil

- Most deforestation in the Amazon and Cerrado is linked to ranching through pasture creation
- With intensification, production could more than double on millions of hectares already cleared, without more clearing (Arantes 2018)



Source: Prodes & Mapbiomas, elaborated by GLUE

Policy context: Brazil's Cattle Agreements

- In place since 2009
- Hybrid governance from public policy (Forest Code) + civil society
- Require slaughterhouses to identify and monitor suppliers for deforestation + other socio-environmental issues
- 75% of slaughterhouses in the Amazon have agreements



Picture: Lisa Rausch

Next steps for Cattle Agreements

- Public Audits in states beyond Pará
- More slaughterhouses sign and implement agreements
- Widespread uptake of monitoring of indirect suppliers; tools like Visipec and others available
- Cattle Agreements in the Cerrado?



Picture: Cattle Farming/CIFOR/[Creative Commons](#)

PRODES: Official deforestation data

- Annual maps available for Amazon and Cerrado biomes
- Produced by national space agency (INPE) since 1988
- High resolution data allows for monitoring at property level
- Highly accurate

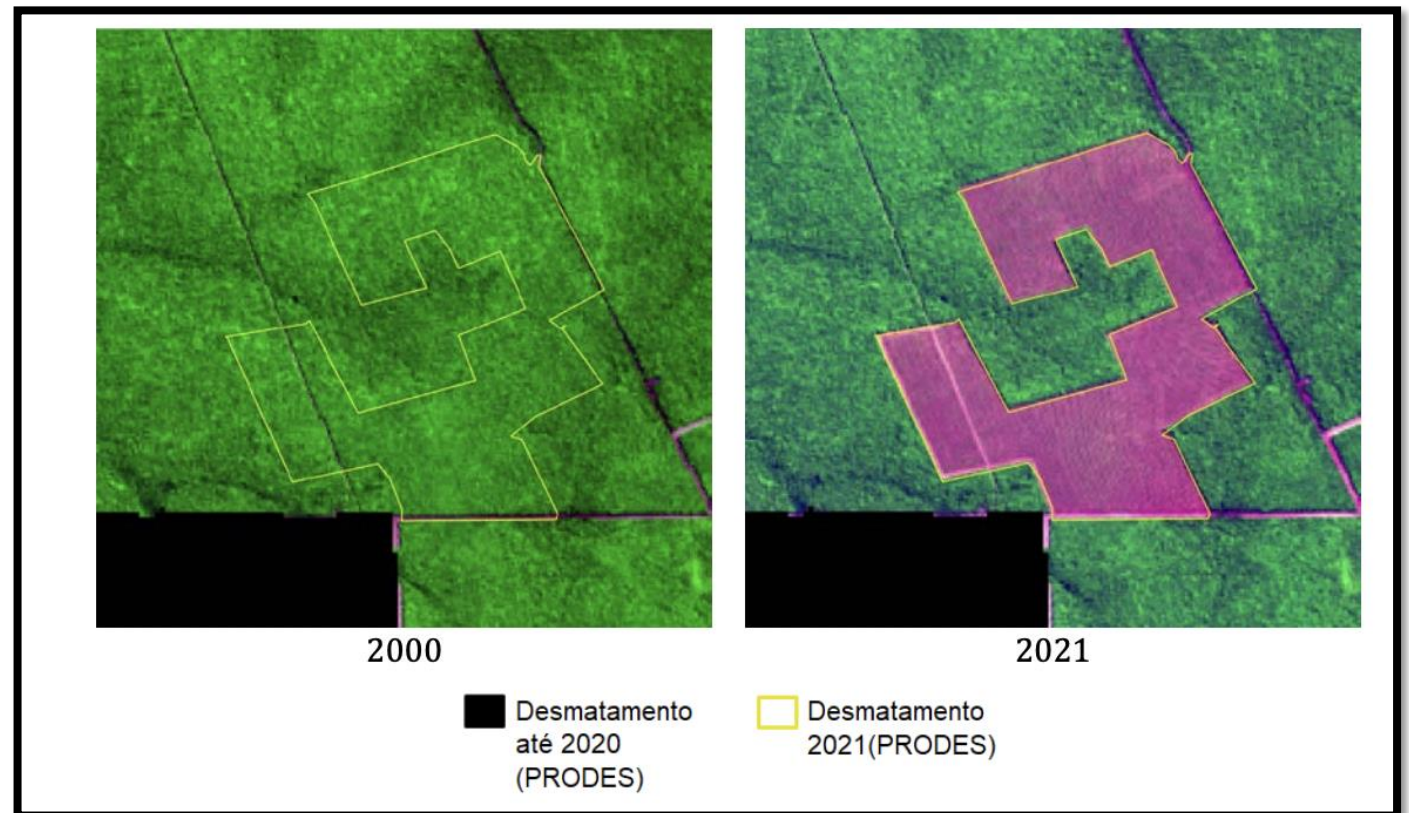
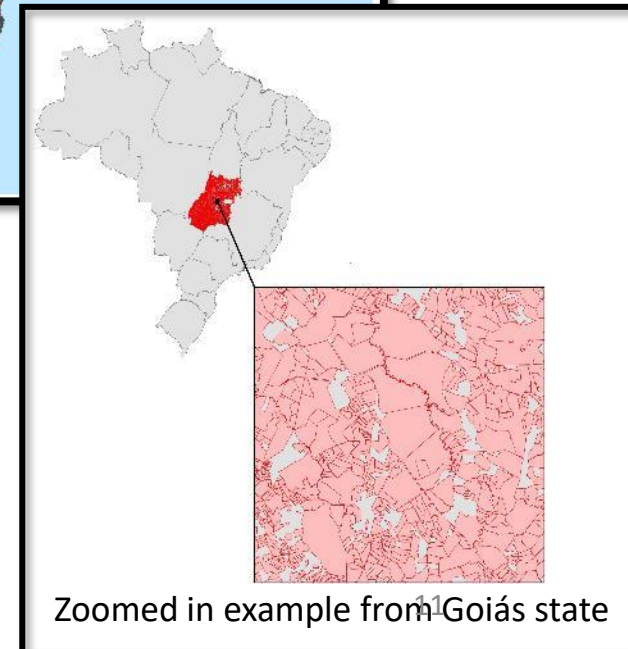
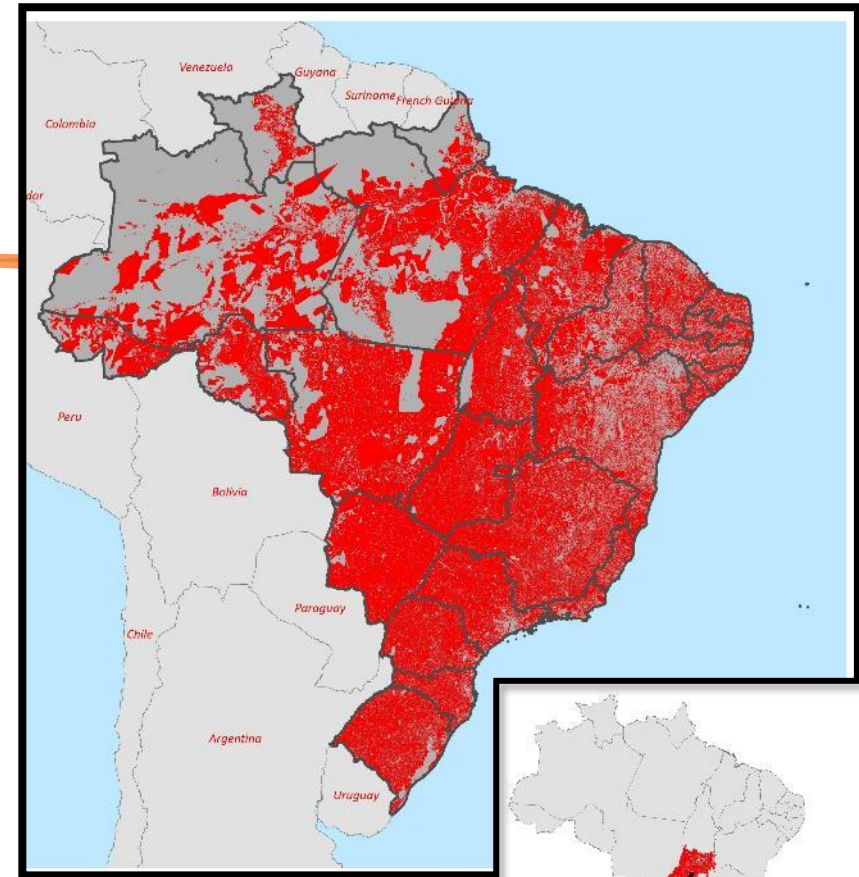


Image: INPE, Prodes Methodology 2022

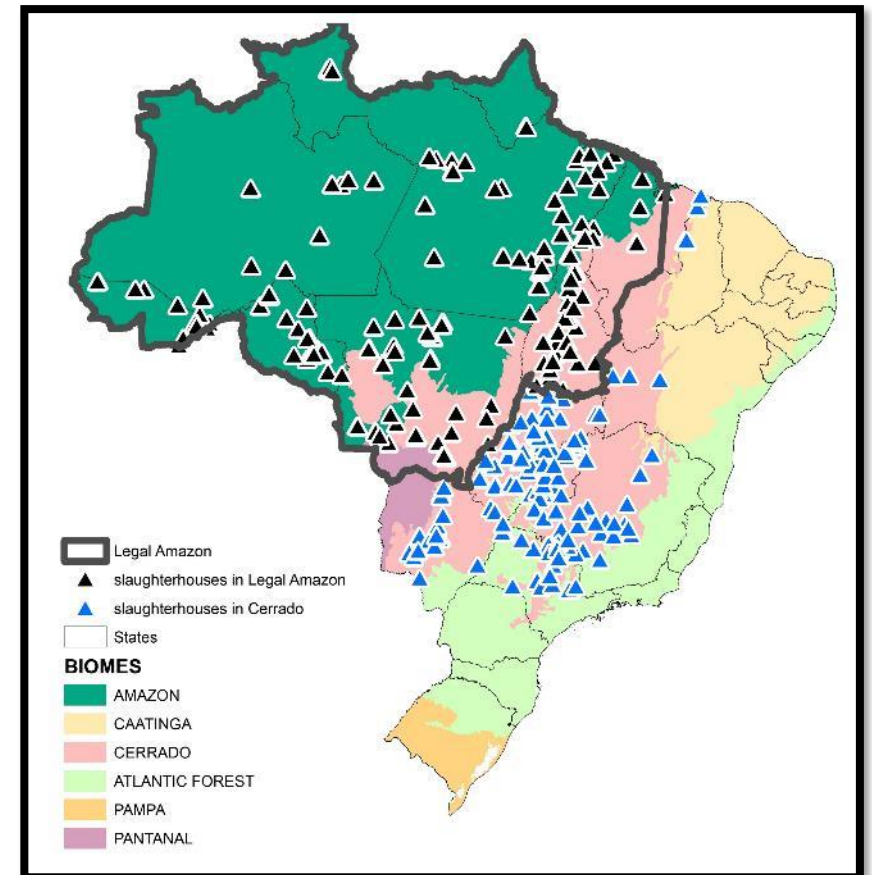
Rural Cadaster (CAR)

- Required for all private properties
- Used to enforce environmental regulations
- ~ 6 million property boundaries in Brazil



LWG slaughterhouse and risk mapping

- UW, NWF, WWF collaboration with LWG
- Mapped >350 slaughterhouses across Brazil
- Assessed deforestation, other compliance risks



Mapping project: key results

- Most suppliers within 250 Km of slaughterhouse
- Current or recent deforestation cutoff reduces % non-compliance

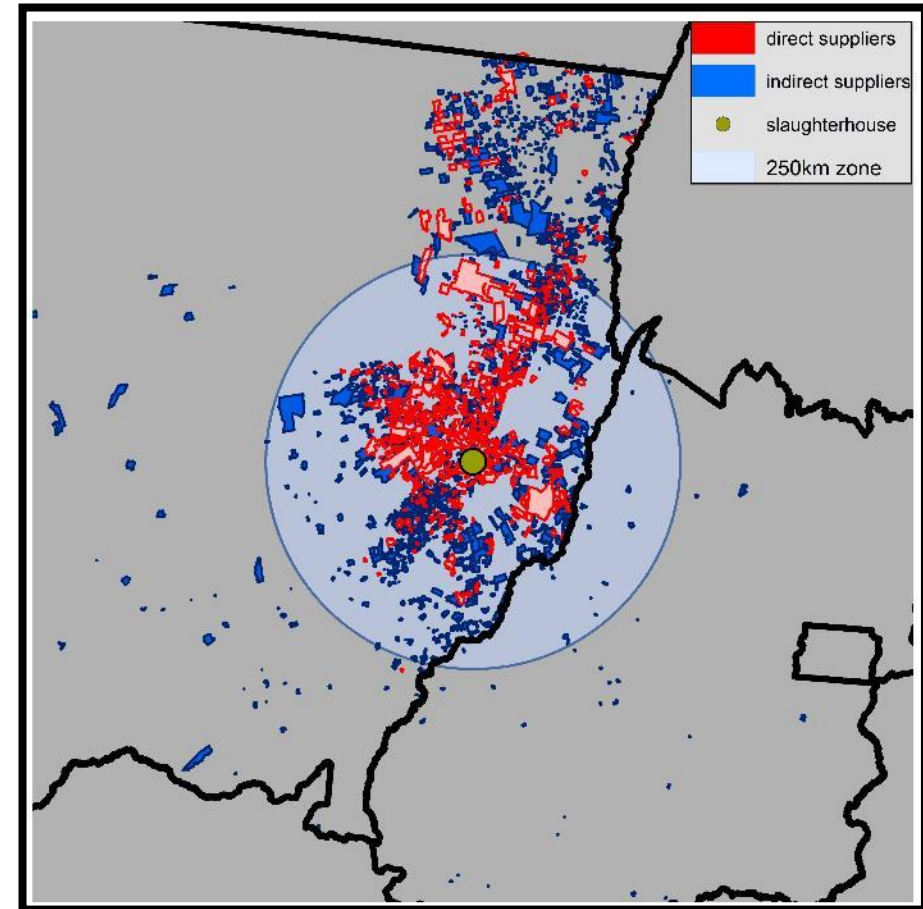


Image: Based on data produced by UW for LWG

Summary of due diligence options in Brazil

- Cattle agreements = meaningful sourcing requirements
- Increasing numbers of slaughterhouses document their compliance to direct supplier level
- Public reports of official audits of slaughterhouses in Para are available
- Data and technology available for all slaughterhouses in Amazon and Cerrado to monitor
- Increasing availability of tools needed to monitor indirect suppliers (e.g. Visipec, others)



THANK YOU

Lisa Rausch
llrausch@wisc.edu
www.gibbslab.com



2022 LWG MEMBER CONFERENCE

Hybrid • September 22, 2022

Sponsored by:

PIPER & SKYE

Thank you!